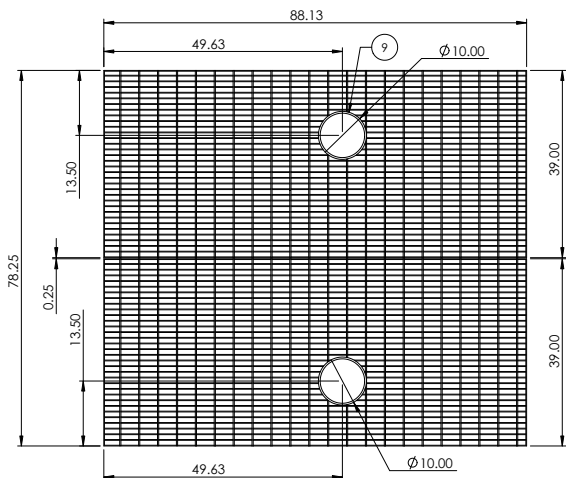


A

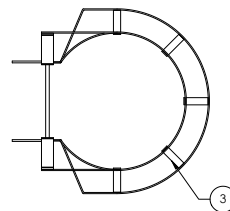
B

C

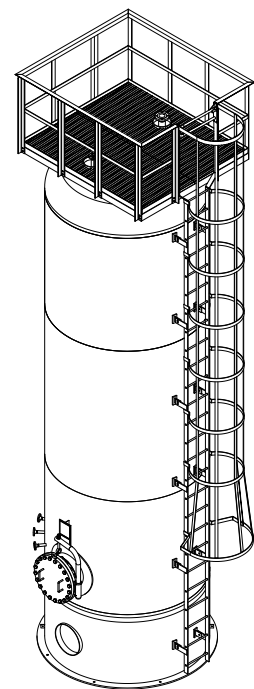
D



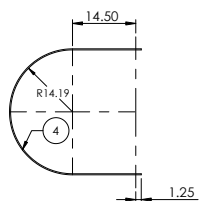
GRATING TOP PLATFORM PLAN VIEW



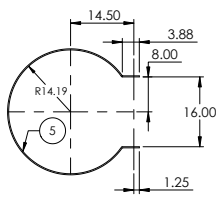
LADDER TOP VIEW



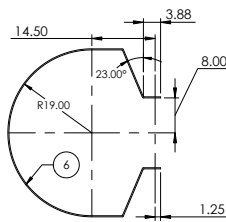
ISOMETRIC VIEW



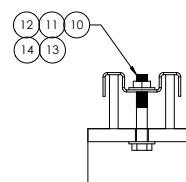
DETAIL "HOOP 3"



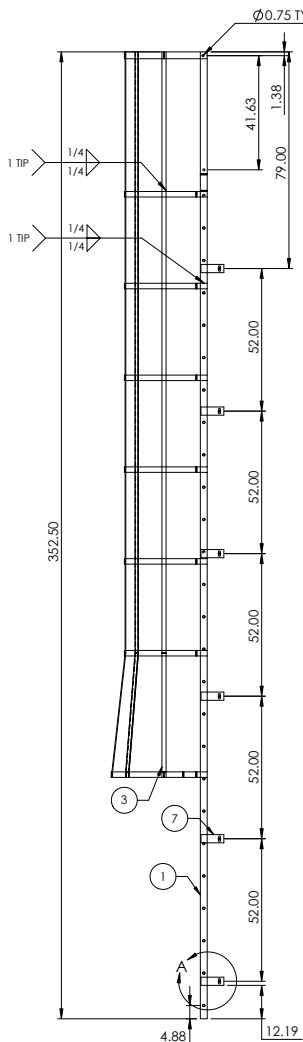
DETAIL "HOOP 2"



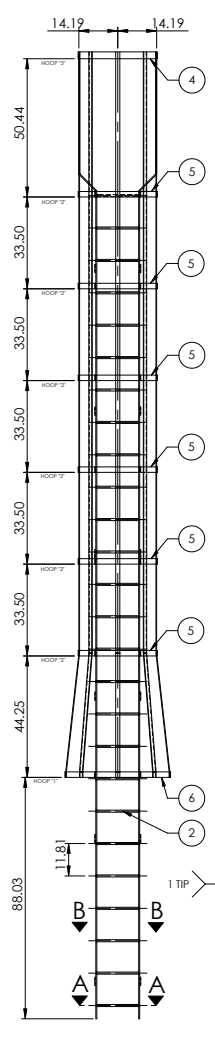
DETAIL "HOOP 1"



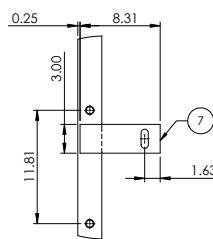
DETAIL CLAMP ON GRATING



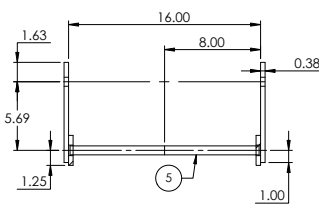
LADDER



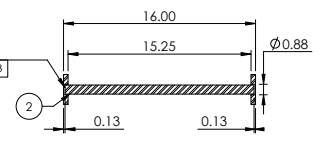
LADDER



DETAIL A, CLIP



SECTION B-B



TYPICAL LADDER RUNG SECTION A-A

NOTES:

1. ALL DIMENSIONS IN (H) UNLESS OTHERWISE SPECIFIED.
2. TOLERANCES: LINEAL FROM 0 - 48" = +/- .10", > 48 - 84" = +/- .316", > 84" = 1/4"; TLT ANGLES +/- 1'; BEVEL ANGLES +/- .5'; FILLETS = 1/16" R.
3. SCALE: NONE SCALE.
4. WPS SHOWN CAN BE USED TO MAKE GENERAL REPAIRS.
5. STRUCTURE COATING FOR UPPER PLATFORM AND MARINE LADDER: IMMERSER HOT GALVANIZED.
6. STRIP PERIMETER OF 1/8" X 1 1/4", SA-36, ALL AROUND THE GRATING.

BILL OF MATERIALS FOR ONE VESSEL REQUIRED TWO.

ITEM NO.	QTY	UNIT	MATERIAL	MATERIAL DESCRIPTION
17	12.00	PIECE	AC	LOCK WASHER, 5/8" DIAM, 1/8" THK., GALVANIZED.
16	12.00	PIECE	AC	NUT, 5/8" DIAM, 11-UNC., GALVANIZED.
15	12.00	PIECE	AC	BOLT, 5/8" DIAM, 1 3/4" LG., 11-UNC., GALVANIZED.
14	14.00	PIECE	AC	LOCK WASHER, 1/4" ID, 1/8" THK., GALVANIZED.
13	14.00	PIECE	AC	WASHER, 1/4" ID, 0.12" THK., GALVANIZED.
12	14.00	PIECE	AC	NUT, 1/4" DIAM, 11-UNC., GALVANIZED.
11	14.00	PIECE	AC	BOLT, 1/4" DIAM, 1 3/4" LG., 11-UNC., GALVANIZED.
10	14.00	PIECE	AC	GRATING IRVING CLIP, GALVANIZED.
9	2.00	PIECE	SA-516-70	PLATE, 2.00", 30.00" LG., 1/4" THK., SEE DWG TO ADJUST.
8	2.00	PIECE	AC	GRATING IRVING, 30.00", 88.00" LG., 1 1/4", 3/16" THK, SERRATED GALVANIZED SEE NOTES, 5, 6.
7	12.00	PIECE	SA-516-70	PLATE, 3.00", 8.34" LG., 3/8" THK., SEE DWG TO ADJUST.
6	1.00	PIECE	SA-36	STRIP, 2.00", 105.12" LG., 1/4" THK., SEE DWG TO ADJUST.
5	6.00	PIECE	SA-36	PLATE, 2.00", 80.43" LG., 1/4" THK., SEE DWG TO ADJUST.
4	1.00	PIECE	SA-36	STRIP, 2.00", 76.80" LG., 1/4" THK., SEE DWG TO ADJUST.
3	5.00	PIECE	SA-36	STRIP, 1 1/2", 284.90" LG., 1/4" THK., SEE DWG TO ADJUST.
2	26.00	PIECE	SA-36	ROUND BAR, 3/4" OD, 15.75" LG.
1	2.00	PIECE	SA-36	STRIP, 2 1/2", 355.12" LG., 3/8" THK., SEE DWG TO ADJUST.

BILL OF MATERIALS

REV.	BY	NAME	APPD	DATE	FOR REVISION / FABRICATION

CUSTOMER: _____ CUSTOMER NAME _____
 ADDRESS: _____ COMPANY ADDRESS _____
 LOCATION: _____ COMPANY LOCATION _____
 CONTRACT No.: _____ CONTRACT NUMBER _____

COMPANY LOGO

COMPANY NAME
COMPANY DIRECTION

TITLE: PLATFORM AND LADDER
SERVICE: KIND OF SERVICE

1	FCAW XXXXX Rev X	SIZE: 86.00 in OD x 244.00 in LONG, T.T	TAG: TAG NUMBER	REVISION
No.	DESCRIPTION	TYPE: VERTICAL	DWN: NAME	M/M/D/YYYY
		S.O.: 10XX	RWD: NAME	M/M/D/YYYY
		CANT. REQ. (QTY): 1	APROBÓ (APPD): NAME	M/M/D/YYYY

WPS

DWG No: PL-XXXX

0